

Prince's Building





Prince's Building

Prince's Building is linked to one of the world's leading hotels, Mandarin Oriental, Hong Kong, as well as to Alexandra House and other major buildings by our pedestrian bridge network.

The 29 levels of Prince's Building contain six levels of contemporary shopping featuring a wide range of world-famous fashion boutiques, specialty stores, fine dining outlets, and a roof top restaurant.

From Prince's Building, it is a short walk to the Airport Express station through our pedestrian bridge network.

Access / Transportation Services

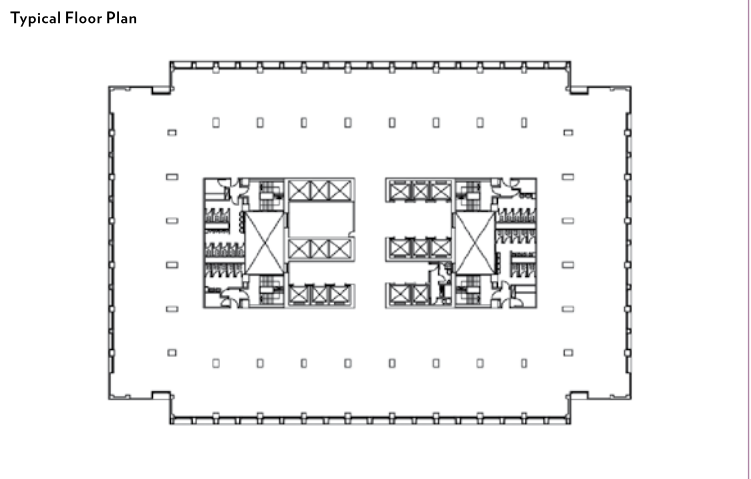
- Prime location - next to Mandarin Oriental Hotel, in the heart of Central
- Adjacent to Central MTR entrances
- Close by the Airport Express station
- Part of Hongkong Land's Central pedestrian bridge system, with links to major buildings

Building Facilities

- 29 levels (including six levels of retail podium)
- Typical floor plate size
 - Approx. 20,800 net sq. ft (low zone)
 - Approx. 21,200 net sq. ft (high zone)
- Easily sub-divisible into smaller offices
- Efficiency: Approx. 100%
- Sprinkler system complying OH1 or OH3 requirement
- Approx. ceiling height 2.77m (floor to floor)
- 15 zoned passenger lifts
- Two service lifts
- 24-hour zoned central air-conditioning
- Life safety emergency generator

Telecommunications Services

- Availability of major fixed network service providers allow fast connection to new services
- Built to EIA/TIA 569-a and managed to EIA/TIA 606 standards
- In-building secure fibre optic and high speed copper cable link to facilitate access of Fixed Telecommunications Network Services (FTNS) service providers
- In-building mobile phone coverage in all office and retail areas, inside lift cars, car parks and back of house areas providing seamless mobile phone access and connectivity from multiple mobile services providers, supporting 2G, 2.5G and 3G mobile networks
- Enhanced TV System include SMATV, Digital Terrestrial Television and Cable TV
- Secure free Wi-Fi in majority of retail areas including the F&B and shopping arcade areas



The information contained in this fact sheet is for guidance purpose only and no warranties are made or intended. 2009