

# Jardine House





# Jardine House

Jardine House is close to Victoria Harbour and enjoys a commanding position in Central.

It has 52 levels and is linked by Hongkong Land's pedestrian bridge system to other key buildings in Central. Close at hand are the Central Mass Transit Railway Terminus and the Airport Express station, with its rapid and frequent trains to Hong Kong International Airport.

### Access / Transportation Services

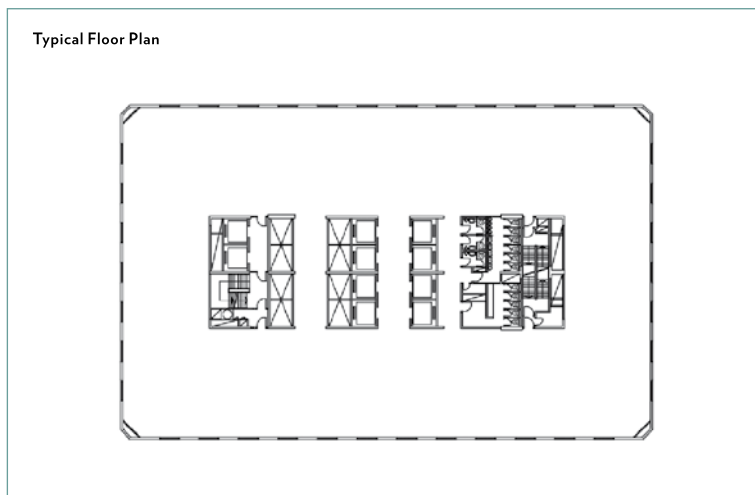
- Prime location - overlooking Victoria Harbour
- Adjacent to the Airport Express station
- Part of Hongkong Land's pedestrian bridge system, with links to major buildings

### Building Facilities

- 52 levels
- Typical floor plate size
  - Approx. 14,400 net sq. ft (low zone)
  - Approx. 14,600 net sq. ft (mid zone)
  - Approx. 15,500 net sq. ft (high zone)
- Efficiency: Approx. 100%
- 24 zoned passenger lifts
- Two service lifts
- 24-hour zoned central air-conditioning
- Approx. ceiling height 2.5 metres
- Suspended ceiling with light fixtures and sprinkler system
- Underfloor service ducts
- Life safety emergency generator
- In-building parking space

### Telecommunications Services

- Availability of major fixed network service providers allow fast connection to new services
- Built to EIA/TIA 569-a and managed to EIA/TIA 606 standards
- In-building secure fibre optic and high speed copper cable link to facilitate access of Fixed Telecommunications Network Services (FTNS) service providers
- In-building mobile phone coverage in all office and retail areas, inside lift cars, car parks and back of house areas providing seamless mobile phone access and connectivity from multiple mobile services providers, supporting 2G, 2.5G and 3G mobile networks
- Enhanced TV System include SMATV, Digital Terrestrial Television and Cable TV
- Secure free Wi-Fi in majority of retail areas including the F&B and shopping arcade areas



The information contained in this fact sheet is for guidance purpose only and no warranties are made or intended. 2009